

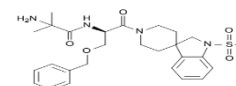


## Ibutamoren(MK-677) Datasheet

### Technical Data

Molecular Weight (MW)	528.662 g/mol	Solubility (25°C)	DMSO 78 mg/mL		
Formula	C27H36N4O5S		Water <1 mg/mL		
CAS No.	159634-47-6		Ethanol 78 mg/mL		
Synonyms	MK677, Ibutamoren	Storage	4 years	-20°C	Powder
			2 weeks	4°C	in DMSO
			6 months	-80°C	in DMSO

MK677 Chemical Structure



### Return Policy

We hope this product has arrived safely with our courier. If there is a problem with your product, please contact us.

We accept returns as long as less than 20% of the product has been used and there is a problem with the substance.

We do not accept returns because of miss ordering for safety reasons.

### Orders & Support

[support@maxmusclelabs.com](mailto:support@maxmusclelabs.com)

We will contact you within one business day

### Website:

[maxmusclelabs.com](http://maxmusclelabs.com)

### Biological Activity

Description	MK677, otherwise known as Ibutamoren is a Growth Hormone secretagogue				
Targets	Selective agonist of the ghrelin receptor				
IC50	3.8 nM (K <sub>i</sub> ) [1]				
In vitro	Growth hormone (GH) stimulates osteoblasts in vitro and increases bone turnover and stimulates osteoblast activity when given to elderly subjects. Probably a major effect of GH on bone is mediated through stimulation of either circulating or locally produced insulin-like growth factor I (IGF-I).[1]				
In vivo	<p>A total of 416 patients completed treatment and assessments at 12 months. Administration of MK-677 25 mg resulted in a 60.1% increase in serum IGF-1 levels at 6 weeks and a 72.9% increase at 12 months. In mixed-effects models that included treatment, time (month), randomization strata (baseline MMSE score &lt; or =20 vs &gt;20), and interaction of treatment-by-time, there were no significant differences between the treatment groups on the CIBIC-plus or the mean change from baseline scores on the ADAS-Cog, ADCS-ADL, or CDR-sob scores over 12 months.</p> <p>Despite evidence of target engagement as indicated by an increase in serum insulin-like growth factor-1, the human growth hormone secretagogue MK-677 25 mg was ineffective at slowing the rate of progression of Alzheimer disease.</p>				
Clinical Trials	Currently under Phase 1 & Clinical Trials. NCT00474279				
Features	MK677 is one the most promising ghrelin agonists used in recent studies involving GHRP & GHRH compounds.				

### Protocol (Only for Reference)

#### Kinase Assay: [1]

In vitro competitive radioligand binding assay	No data
--	---------

#### Animal Study:[1]

Animal Models	Immature castrated male Sprague-Dawley rats
Formulation	Dissolved in DMSO, and diluted in saline
Doses	1 mg/day
Administration	Subcutaneous injection

#### References

[1]M.G. MURPHY, M.A. BACH, THE MK-677 STUDY

**PLEASE KEEP THE PRODUCT UNDER -20°C FOR LONG-TERM STORAGE.**

**NOT FOR HUMAN, VETERINARY DIAGNOSTIC OR THERAPEUTIC USE**

